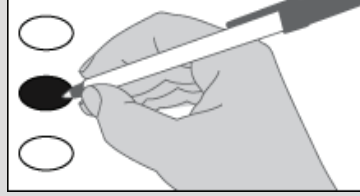


**Instructions**

**How to Vote**



Use a **dark colored pen** to completely fill in the oval to the left of your choice.

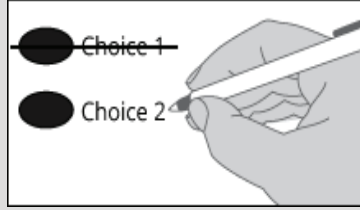
**Vote for ONLY one in each contest.**

If you vote for more than one choice, your vote will not count for that race or measure.

**Write-in Option**

To vote for a write-in candidate fill in the oval next to the write-in line and print the name.

**How to Correct a Vote**



To make a correction, draw a line through the entire incorrect choice. You then have the option of making another choice.

**Need Voter Assistance?**

For a replacement ballot or for information on Accessible Voting Units (available 20 days before Election Day) please call us at **(360) 417-2221**.

**Want More Information About What's On Your Ballot?**

View ballot content in your mailed *Voters' Pamphlet* or the *Online Voters' Guide* at: [www.clallamcountywa.gov/elections](http://www.clallamcountywa.gov/elections).

**Who Donates to Campaigns?**

For a list of the people and organizations that donated to state and local candidates and ballot measure campaigns, visit: [www.pdc.wa.gov](http://www.pdc.wa.gov). To view financial contributors for federal candidates, visit: [www.fec.gov](http://www.fec.gov).

**Returning Your Ballot**

*By Mail:* Ballots must be postmarked on or before Election Day to be counted.

*By Official Ballot Drop Box:*

Ballots must be deposited inside an Official Ballot Drop Box by 8:00 p.m. on Election Night to be counted.

**See insert for Official Ballot Drop Box locations.**

**Initiative to the People**

**Initiative Measure No. 2066**

Initiative Measure No. 2066 concerns regulating energy services, including natural gas and electrification. This measure would repeal or prohibit certain laws and regulations that discourage natural gas use and/or promote electrification, and require certain utilities and local governments to provide natural gas to eligible customers.

Should this measure be enacted into law?

- Yes
- No

**Initiatives to the Legislature**

**Initiative Measure No. 2109**

Initiative Measure No. 2109 concerns taxes. This measure would repeal an excise tax imposed on the sale or exchange of certain long-term capital assets by individuals who have annual capital gains of over \$250,000. This measure would decrease funding for K-12 education, higher education, school construction, early learning, and childcare.

Should this measure be enacted into law?

- Yes
- No

**Initiative Measure No. 2117**

Initiative Measure No. 2117 concerns carbon tax credit trading. This measure would prohibit state agencies from imposing any type of carbon tax credit trading, and repeal legislation establishing a cap and invest program to reduce greenhouse gas emissions. This measure would decrease funding for investments in transportation, clean air, renewable energy, conservation, and emissions-reduction.

Should this measure be enacted into law?

- Yes
- No

**Initiative Measure No. 2124**

Initiative Measure No. 2124 concerns state long term care insurance. This measure would provide that employees and self-employed people must elect to keep coverage under RCW 50B.04 and could opt-out any time. It would also repeal a law governing an exemption for employees. This measure would decrease funding for Washington's public insurance program providing long-term care benefits and services.

Should this measure be enacted into law?

- Yes
- No

**Federal: Partisan Offices**

**United States President/Vice President**

- Kamala D. Harris/  
Tim Walz  
*Democratic Party Nominees*
- Donald J. Trump/  
JD Vance  
*Republican Party Nominees*
- Robert F. Kennedy Jr./  
Nicole Shanahan  
*We The People Party Nominees*
- Jill Stein/  
Rudolph Ware  
*Green Party Nominees*
- Claudia De la Cruz/  
Karina Garcia  
*Socialism And Liberation Party Nominees*
- Rachele Fruit/  
Dennis Richter  
*Socialist Workers Party Nominees*
- Joseph Kishore/  
Jerry White  
*Socialist Equality Party Nominees*
- Chase Oliver/  
Mike ter Maat  
*Libertarian Party Nominees*
- Cornel West/  
Melina Abdullah  
*Justice For All Party Nominees*
- Shiva Ayyadurai/  
Crystal Ellis  
*Independent Candidates*

**READ: Each candidate for President and Vice President is the official nominee of a political party. For other partisan offices, each candidate may state a political party that he or she prefers. A candidate's preference does not imply that the candidate is nominated or endorsed by the party, or that the party approves of or associates with that candidate.**

**Federal: Partisan Offices**

**U.S. Senator**

- Maria Cantwell  
*(Prefers Democratic Party)*
- Dr Raul Garcia  
*(Prefers GOP Party)*
- 

**Congressional District 6 U.S. Representative**

- Emily Randall  
*(Prefers Democratic Party)*
- Drew C MacEwen  
*(Prefers Republican Party)*
- 

**State: Partisan Offices**

**Governor**

- Bob Ferguson  
*(Prefers Democratic Party)*
- Dave Reichert  
*(Prefers Republican Party)*
- 

**Lt. Governor**

- Denny Heck  
*(Prefers Democratic Party)*
- Dan Matthews  
*(Prefers Republican Party)*
- 

**Secretary of State**

- Steve Hobbs  
*(Prefers Democratic Party)*
- Dale Whitaker  
*(Prefers Republican Party)*
- 

**State: Partisan Offices**

**State Treasurer**

- Mike Pellicciotti  
*(Prefers Democratic Party)*
- Sharon Hanek  
*(Prefers Republican Party)*
- 

**State Auditor**

- Pat (Patrice) McCarthy  
*(Prefers Democratic Party)*
- Matt Hawkins  
*(Prefers Republican Party)*
- 

**Attorney General**

- Pete Serrano  
*(Prefers Republican Party)*
- Nick Brown  
*(Prefers Democratic Party)*
- 

**Commissioner of Public Lands**

- Jaime Herrera Beutler  
*(Prefers Republican Party)*
- Dave Upthegrove  
*(Prefers Democratic Party)*
- 

**State: Nonpartisan Office**

**Superintendent of Public Instruction**

- Chris Reykdal
- David Olson
- 

**State: Partisan Offices**

**Insurance Commissioner**

- Patty Kuderer  
*(Prefers Democratic Party)*
- Phil Fortunato  
*(Prefers Republican Party)*
- 

**Legislative District 24 State Senator**

- Mike Chapman  
*(Prefers Democratic Party)*
- Marcia Kelbon  
*(Prefers Republican Party)*
- 

**Legislative District 24 State Representative Position 1**

- Adam Bernbaum  
*(Prefers Democratic Party)*
- Matthew (Matt) Roberson  
*(Prefers Republican Party)*
- 

**Legislative District 24 State Representative Position 2**

- Steve Tharinger  
*(Prefers Democratic Party)*
- Terry Roberts  
*(Prefers Republican Party)*
- 

**County: Partisan Office**

**County Commissioner District No. 2**

- Randy Johnson  
*(States No Party Preference)*
- Kate Dexter  
*(Prefers Democratic Party)*
-

**OFFICIAL SAMPLE BALLOT**

Clallam County, Washington

November 5, 2024

General Election

889

**Judicial:  
Nonpartisan Offices**

**Supreme Court  
Justice Position 2**

- Sal Mungia
- Dave Larson
- \_\_\_\_\_

**Supreme Court  
Justice Position 8**

- Steve Gonzalez
- \_\_\_\_\_

**Supreme Court  
Justice Position 9**

- Sheryl Gordon McCloud
- \_\_\_\_\_

**Court of Appeals  
Division 2 District 2  
Judge Position 2**

- Rebecca Glasgow
- \_\_\_\_\_

**Clallam Superior Court  
Judge Position 1**

- Elizabeth Stanley
- \_\_\_\_\_

**Clallam Superior Court  
Judge Position 2**

- Simon Barnhart
- \_\_\_\_\_

**Clallam Superior Court  
Judge Position 3**

- Brent Basden
- \_\_\_\_\_

**PUD: Nonpartisan  
Offices**

**Public Utility District No. 1  
Commissioner District No. 2  
2-Year Unexpired Term**

- John Purvis
- \_\_\_\_\_

**Public Utility District No. 1  
Commissioner District No. 3  
6-Year Short & Full Term**

- Ken Simpson
- Phyllis Bernard
- \_\_\_\_\_

**Local Issue**

**Port Angeles School Dist. 121  
Proposition No. 1  
Replacement Education  
Programs and Operation Levy**

The Board of Directors of Port Angeles School District No. 121 adopted Resolution No. 2324-10, concerning a proposition to finance educational programs and operation expenses. This proposition would authorize the District to levy the following excess taxes, in place of an expiring levy, upon all taxable property within the District, for support of the District's General Fund educational programs and operation expenses not funded by the State of Washington:

Collect- ion Year	Assessed Value /\$1,000	Levy Amount
2026	\$1.40	\$8,555,041
2027	\$1.40	\$8,640,591
2028	\$1.40	\$8,726,997
2029	\$1.40	\$8,814,267

all as provided in Resolution No. 2324-10. Should this proposition be approved?

- YES
- NO

**Port Angeles School Dist. 121  
Proposition No. 2  
Bonds to Replace and  
Renovate Deteriorating  
Schools and Improve Safety**

The Board of Directors of Port Angeles School District No. 121 adopted Resolution No. 2324-11, concerning a proposition to provide safe, modern facilities to enhance learning. This proposition would authorize the District to: construct a new elementary school to replace Franklin Elementary School; make District-wide safety and security improvements (including cameras, access controls, door locks, communications systems); renovate Port Angeles High School (including renovating the Performing Arts Center and constructing an instructional wing to replace selected buildings); issue \$140,000,000 of general obligation bonds maturing within 21 years; and levy annual excess property taxes to repay the bonds, all as provided in Resolution No. 2324-11. Should this proposition be:

- APPROVED
- REJECTED

**Proposition No. 1  
Clallam County Fire Protection  
District No. 2  
Property Tax Levy For Fire  
Protection and Emergency  
Medical Services**

The Board of Clallam County Fire Protection District No. 2, adopted Resolution No. 2024-04 concerning a proposition to maintain and adequately fund District operations. If approved, this proposition would finance fire protection and emergency medical services by establishing the District's regular property tax levy in 2024 at \$1.50 per \$1,000.00 of assessed valuation and authorize setting the limit factor at the greater of the statutory 1% limit or the June Seattle-Tacoma-Bellevue CPI-U for the following five years. The maximum allowable levy in the final year shall serve as the base for subsequent levy limitations as provided by Chapter 84.55 RCW.

Should this proposition be:

- Approved
- Rejected

**Nonpartisan Office**

**FOR THIS OFFICE ONLY:  
Vote for up to FIVE**

**Clallam County  
Charter Review Commission  
Commissioner District No. 1  
1-Year Term**

- Jeff Tozzer
- Christine Charters
- Charles Main
- Sarah Kincaid
- Alex Fane
- Jim Stoffer
- Bill Benedict
- Derek Huntington
- Tom Ash
- Susan Fisch
- \_\_\_\_\_
- \_\_\_\_\_
- \_\_\_\_\_
- \_\_\_\_\_
- \_\_\_\_\_

**Clallam County  
Charter Review Commission  
Commissioner District No. 2  
1-Year Term**

- Jamie Porter
- Sandi Lytle
- Rae Heselbach
- Patti Morris
- James Taylor
- Paul J. Pickett
- Ron Richards
- Ron Cameron
- Karen Wahlsten
- Richard Wade
- Marolee Smith
- Chris Noble
- Debby Fuson
- Katina Hester
- Holden A. Fleming
- \_\_\_\_\_
- \_\_\_\_\_
- \_\_\_\_\_
- \_\_\_\_\_

**Nonpartisan Office**

**Clallam County  
Charter Review Commission  
Commissioner District No. 3  
1-Year Term**

- Karen O'Donnell
- Brian Heberling
- Rod Fleck
- Nina Sarmiento
- Tyson Hester
- Cathy Walde
- Mark Hodgson
- Paul Kolesnikoff
- Christy Holy
- John Hauck
- \_\_\_\_\_
- \_\_\_\_\_
- \_\_\_\_\_
- \_\_\_\_\_

**End of Ballot**